

# Importance of Voluntary Work to an Oncology Center

*Segalla, José Getulio Martins, Capra, Rute Maria Martins,  
Veneziano, Cláudia Luciana de Araújo, Veneziano, Donald  
Botelho, Machado, Paulo Eduardo de Abreu e  
Coradazzi, Ana Lucia.*

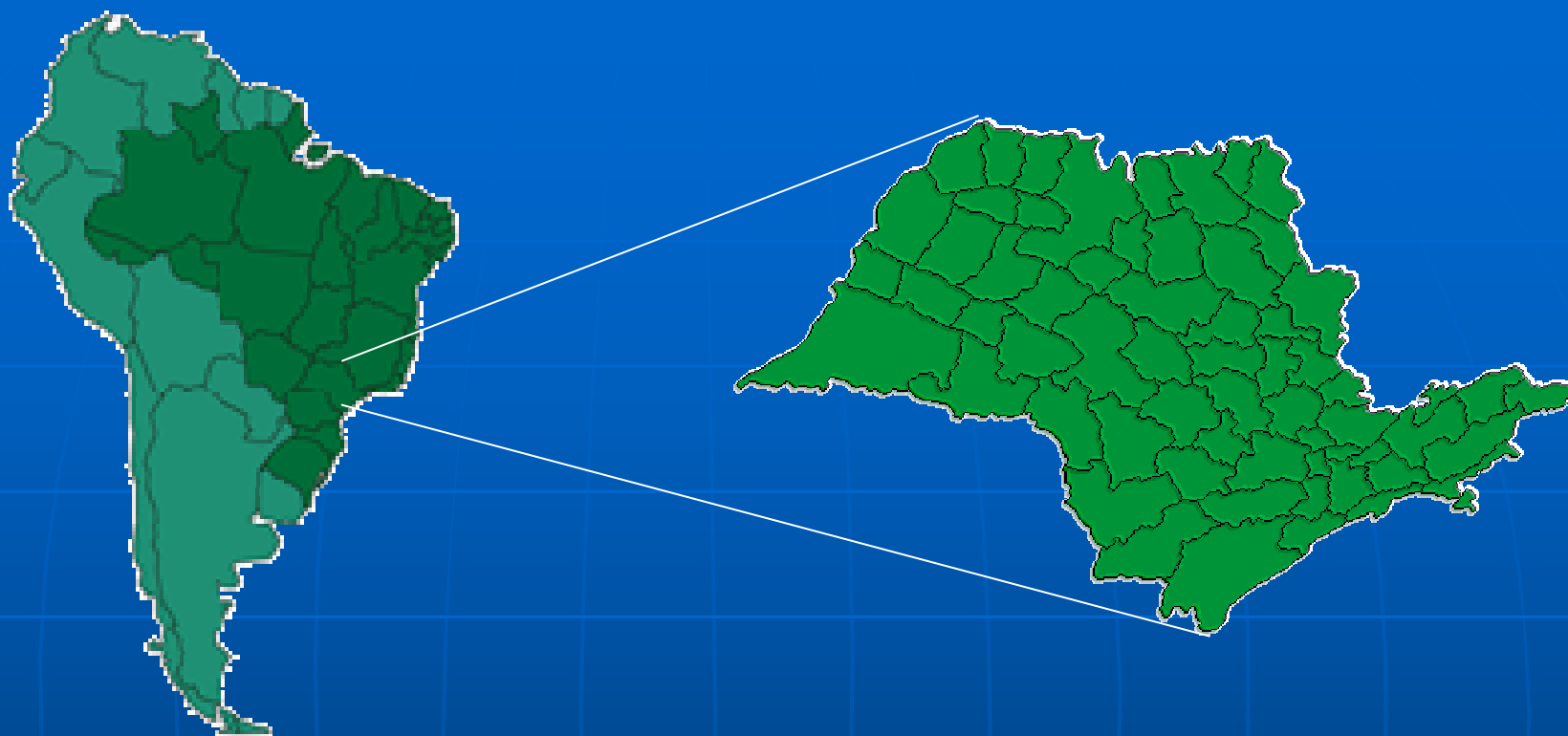
**HOSPITAL CANCER REGISTRY (RHC)  
AMARAL CARVALHO HOSPITAL (HAC)  
JAU - SAO PAULO - BRAZIL**

# **AUTHOR'S DISCLOSURE**

- **According to Resolution 1595/2000 of the Federal Council of Medicine (CFM) Brasil and the DRC 96/2009 ANVISA, Brasil, I declare that:**
  - 1. Principal or sub-investigator in clinical trials sponsored by companies: Amgen, Astra-Zeneca, BMS, Eli-Lilly, GSK, Libbs, Novartis, Pfizer, Roche and Sanofi-Aventis;**
  - 2. Lecture/conference grants as speaker in medical meetings by Pfizer and Roche;**
  - 3. Member of the local advisory board of companies: Pfizer and Lilly;**
  - 4. Do not own stocks of any pharmaceutical companies.**
  - 5. Do not have any conflicts of interest about this presentation**

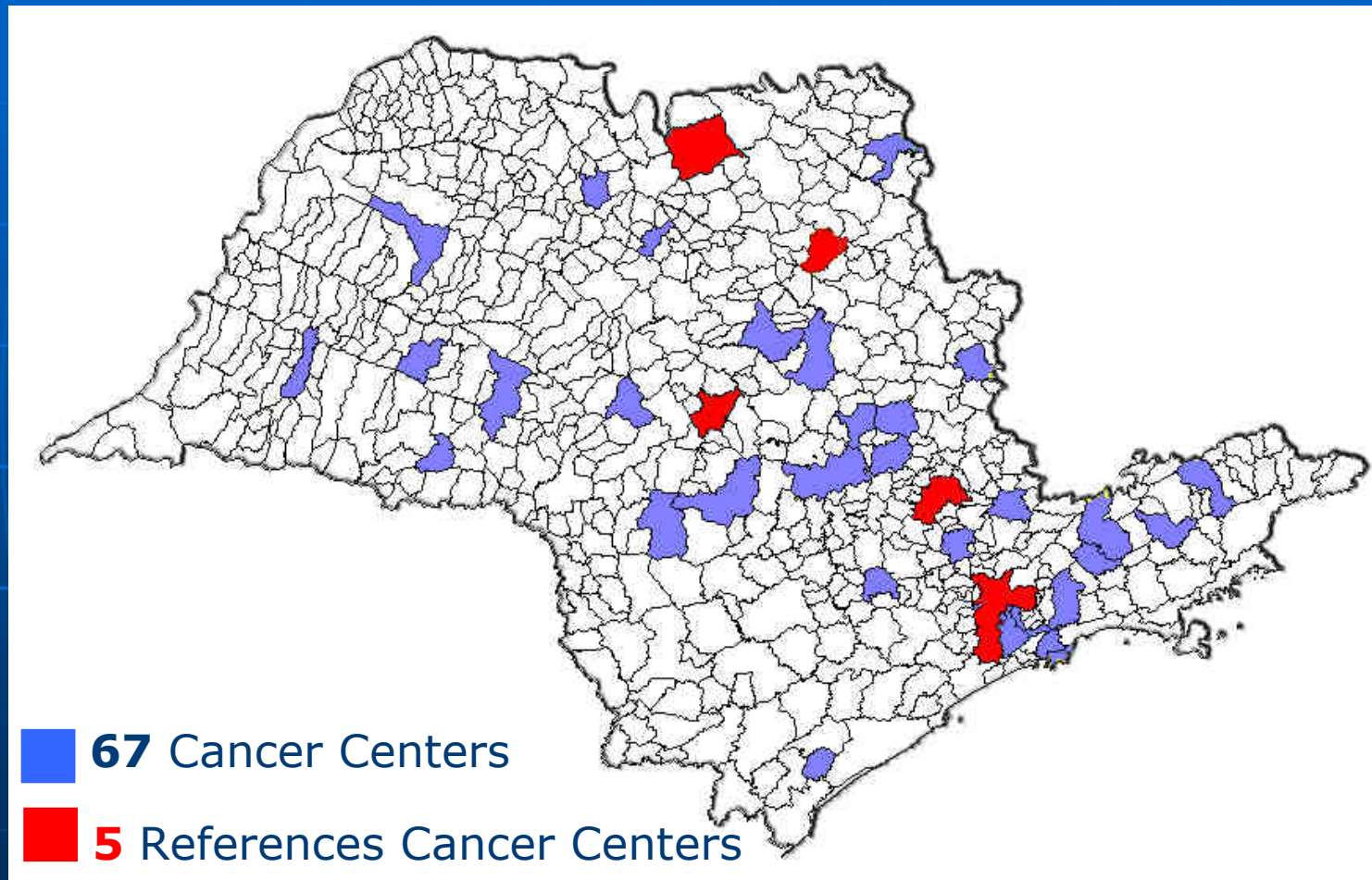


	<b>BRAZIL</b>
<b>Population</b> (IBGE-2009)	<b>191,481,045</b>
<b>Estimated new cancer patients</b> (INCA-2009)	<b>466,730</b>
<b>Deaths by cancer</b> (DATASUS - 2007)	<b>161,491</b>



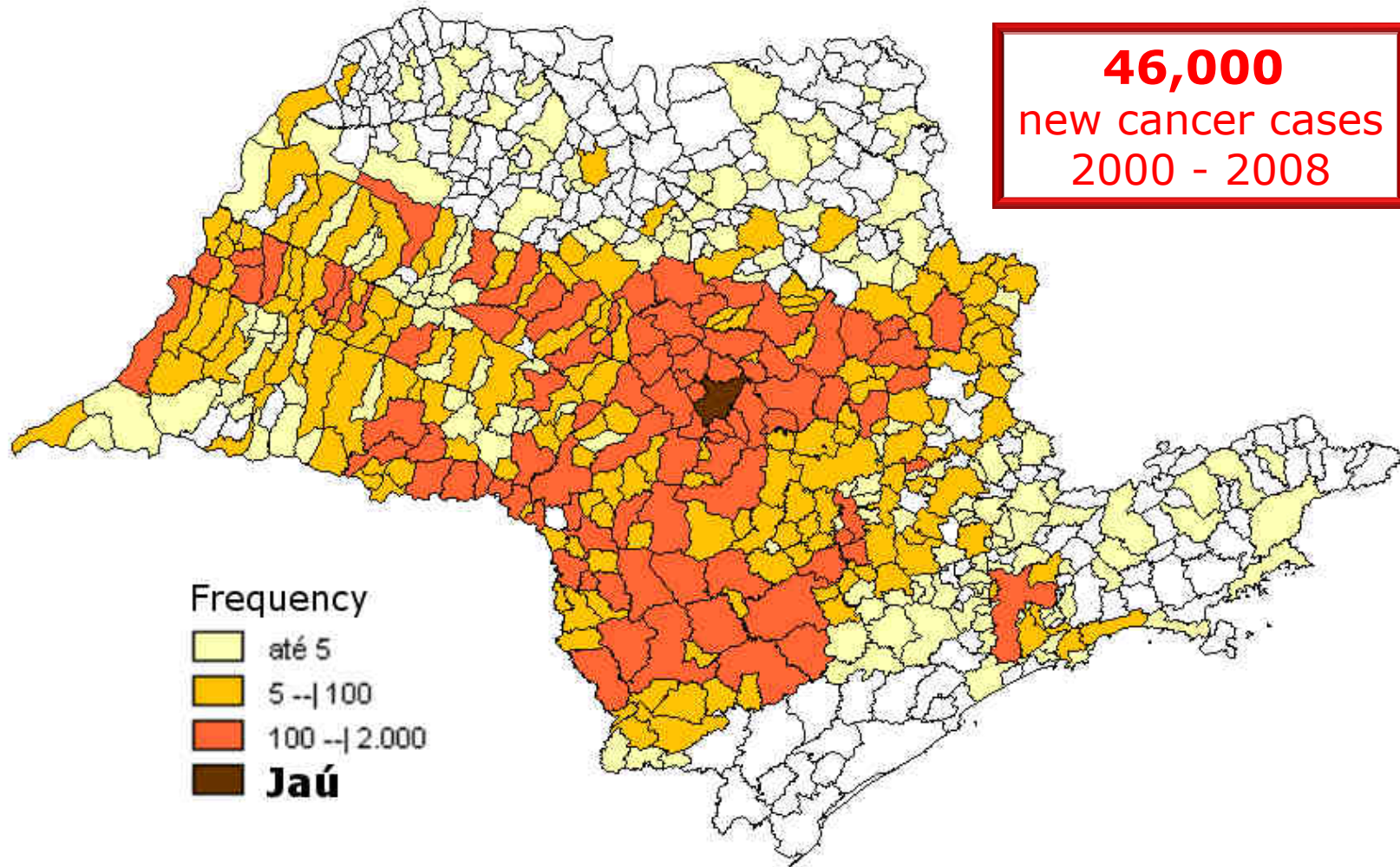
	<b>BRAZIL</b>	<b>SÃO PAULO</b>
<b>Population</b> (IBGE-2009)	<b>191,481,045</b>	<b>41,384,089</b>
<b>Estimated new cancer patients</b> (INCA-2009)	<b>466,730</b>	<b>133,980</b>
<b>Deaths by cancer</b> (DATASUS - 2007)	<b>161,491</b>	<b>42,428</b>

# Cancer Centers - São Paulo State



Cancer Treatment Centers

# Referral System to Hospital Amaral Carvalho



An aerial photograph of Hospital Amaral Carvalho, a large multi-story building complex with a grey roof, situated in a densely populated residential area with many houses featuring red-tiled roofs. The hospital is surrounded by greenery and parking lots. The text is overlaid on the image.

# Hospital Amaral Carvalho

**1.800 employees**

**290 beds**

**18.000 surgeries/year**

**190 bone marrow-  
transplantations/year**

**5.500 new cancer cases/year**

# HAC Volunteers (since 1978)

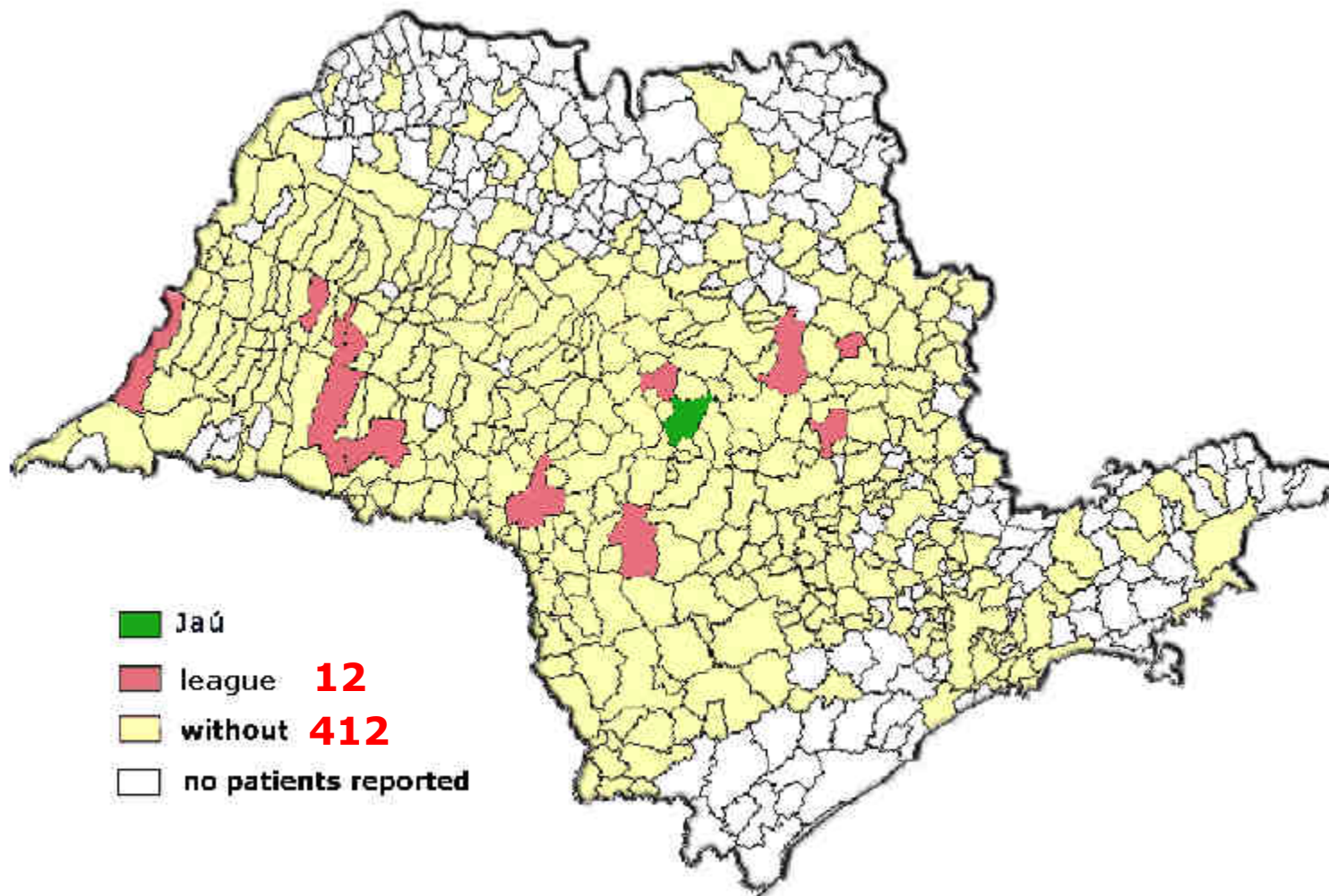




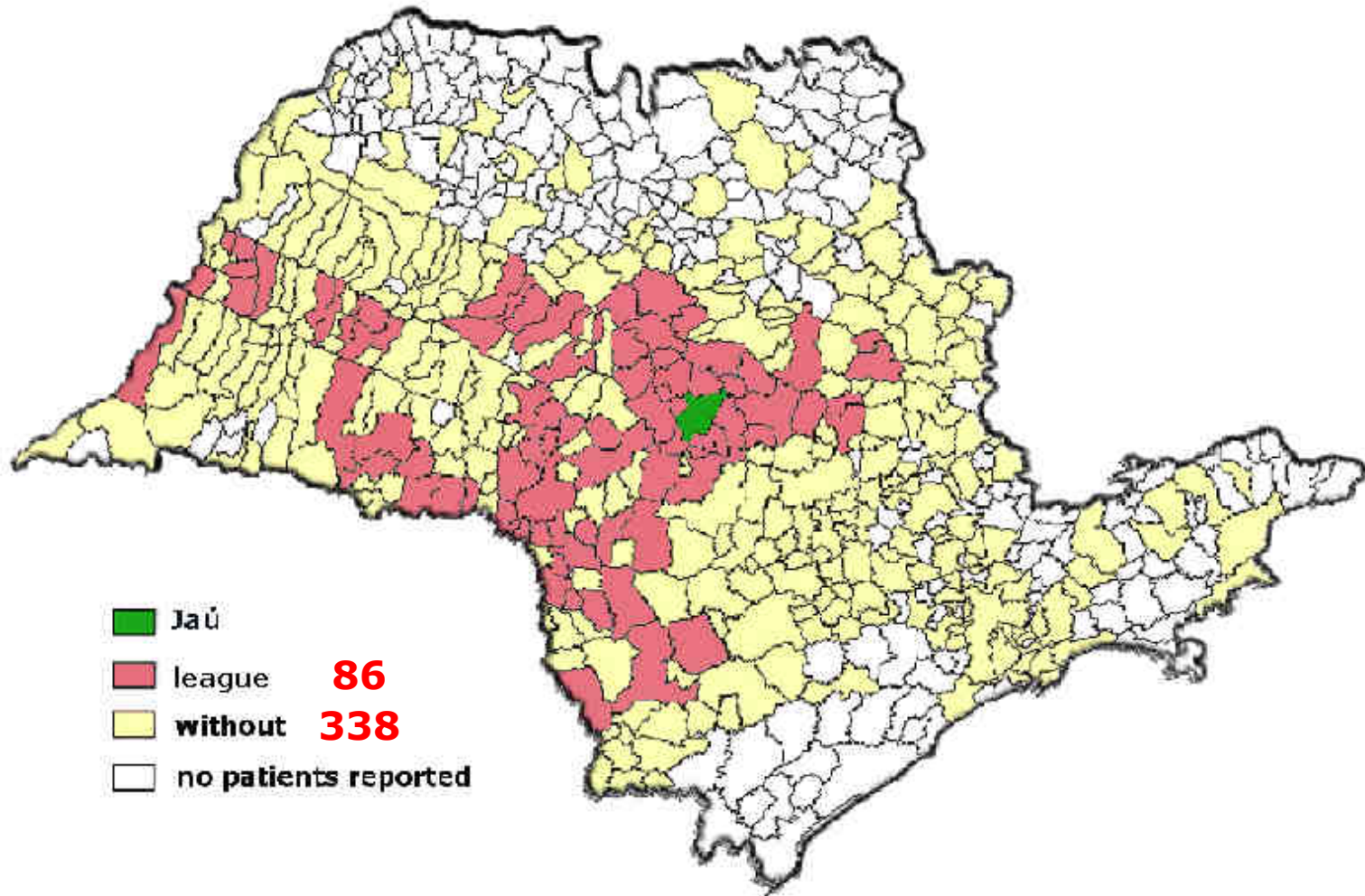
# Voluntary Work

- Population data
- Prevention and early diagnosis
- Population access to Cancer Center
- Provide clinical support during treatment
- Paliattive Care

# Support Leagues for Cancer Patients - 1998



# Leagues of Supporting for Cancer Patients - 2005



# New Cancer Patients by Clinical Stage

2005

Stage	Total	
	N	%
0	316	6,7
I	1.392	29,5
II	1.245	26,4
III	860	18,3
IV	899	19,1
Total	4.712	100,0

# New Cancer Patients by Clinical Stage

2005

Stage	Total		League available	
	N	%	N	%
0	316	6,7	250	7,1
I	1.392	29,5	1.137	32,3
II	1.245	26,4	903	25,7
III	860	18,3	621	17,6
IV	899	19,1	609	17,3
Total	4.712	100,0	3.520	100,0

# New Cancer Patients by Clinical Stage

2005

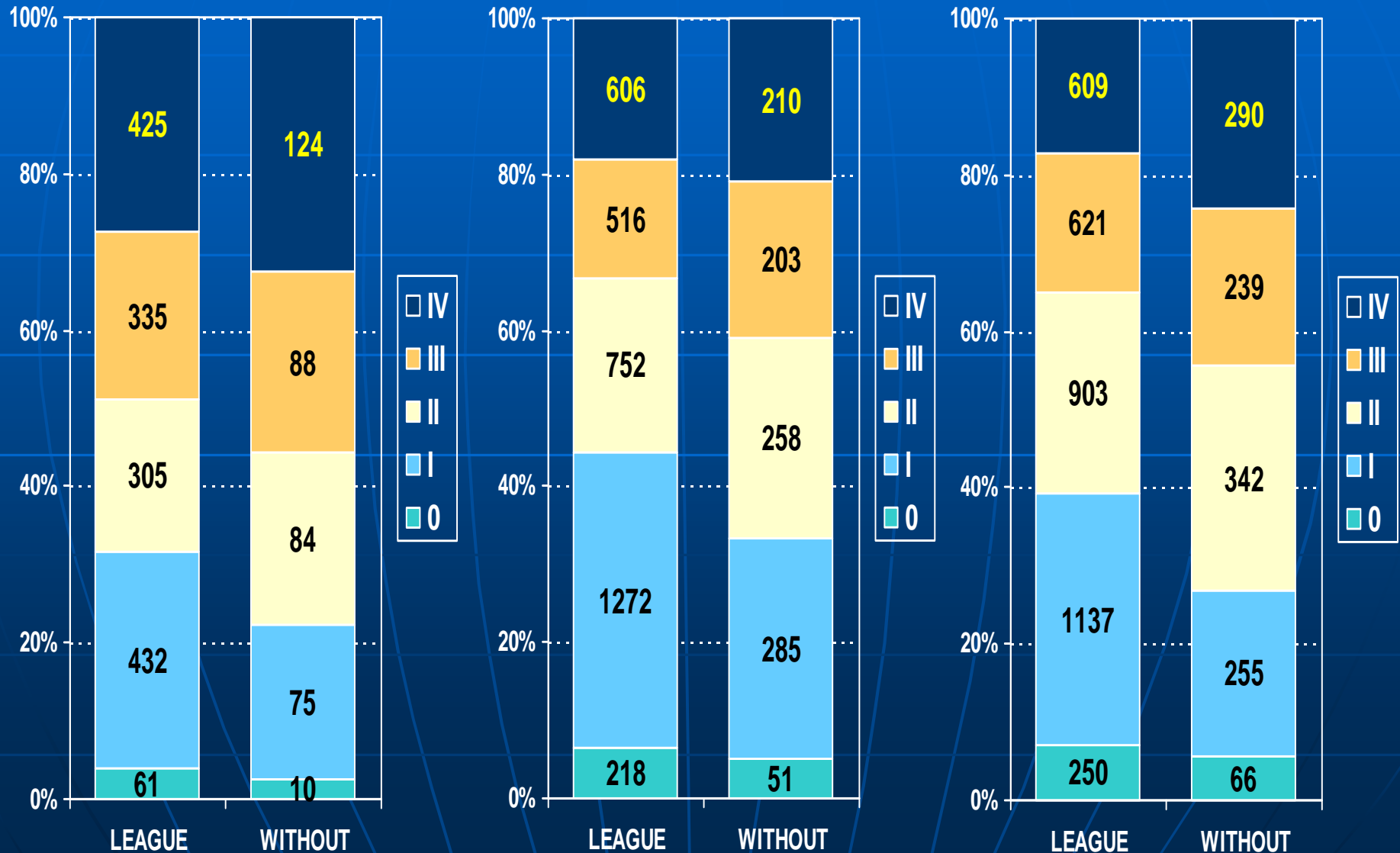
Stage	Total		League available		No League	
	N	%	N	%	N	%
0	316	6,7	250	7,1	66	5,5
I	1.392	29,5	1.137	32,3	255	21,4
II	1.245	26,4	903	25,7	342	28,7
III	860	18,3	621	17,6	239	20,1
IV	899	19,1	609	17,3	290	24,3
Total	4.712	100,0	3.520	100,0	1.192	100,0

# Clinical Stage by Year

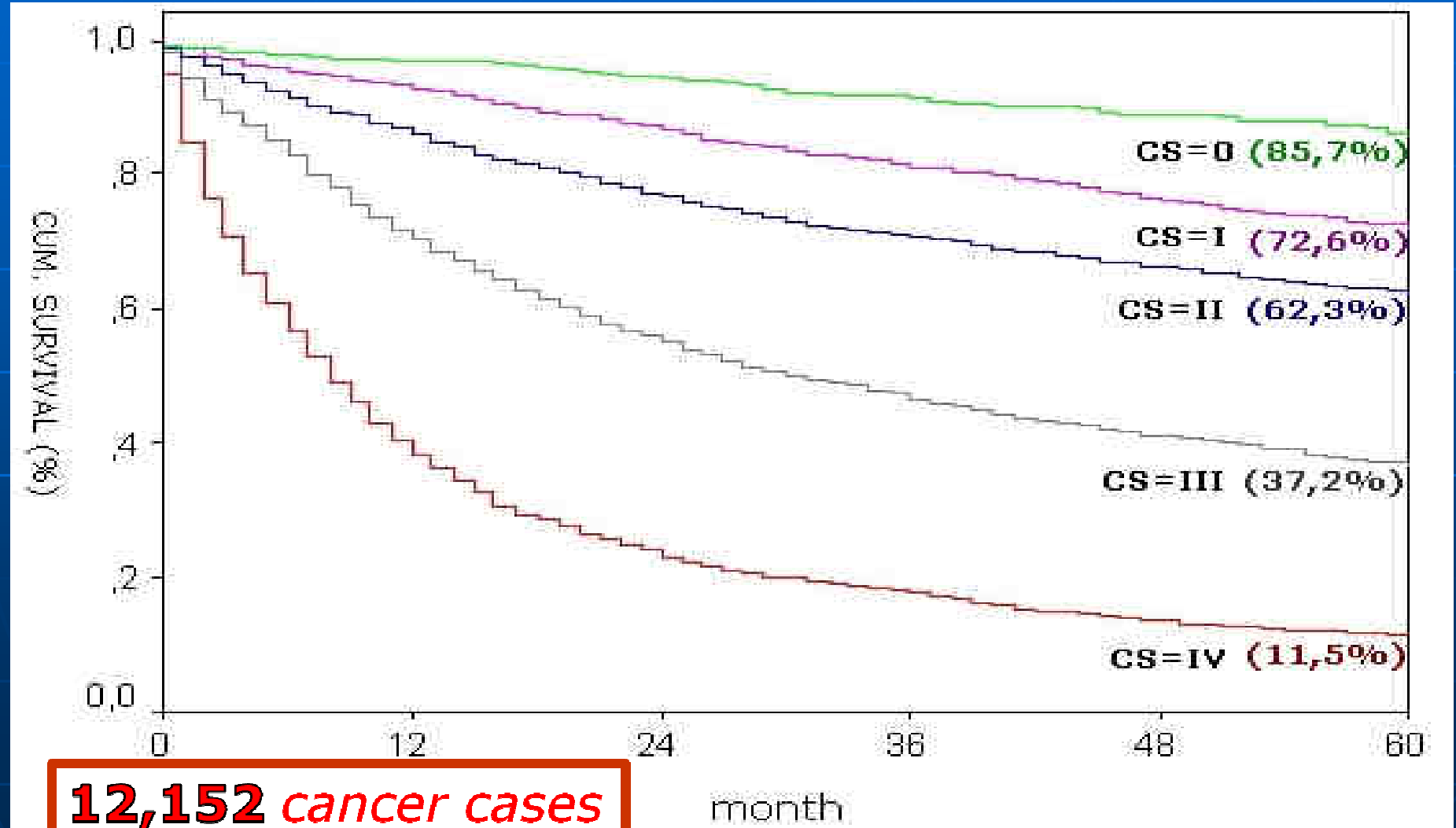
1998

2003

2005

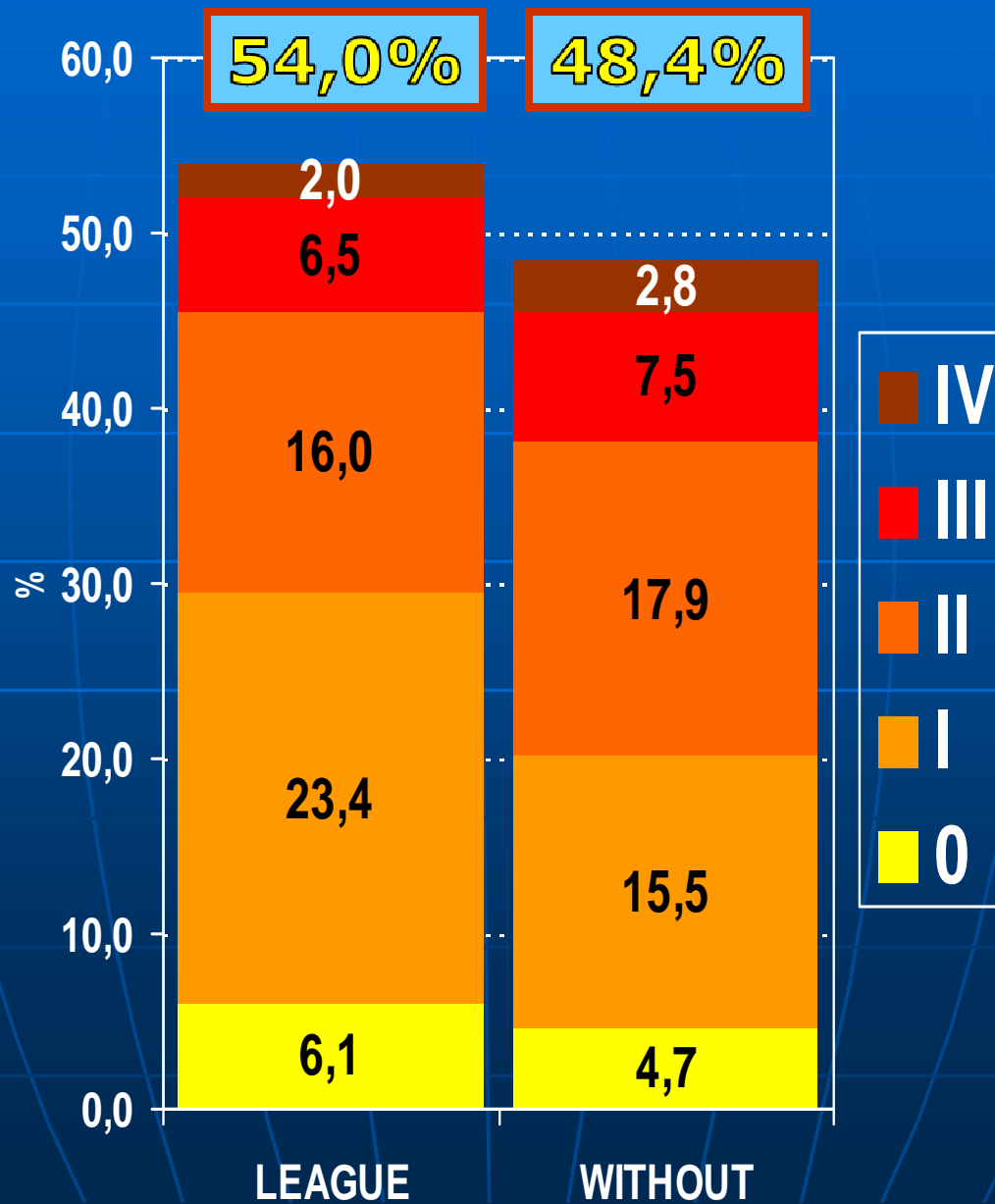


# Overall survival, all cancer patients, by clinical stage (1999-2002 HAC)





# Estimated Survival - 2005



# Conclusions

- The cities which have ***support leagues to cancer patients*** have a higher proportion of initial stages compared to advanced stages
- Five-year survival of cancer patients is 11,6% higher in the cities where ***support leagues to cancer patients*** are available, irrespective of treatment protocols (patients were treated at the same Cancer Center)

# Hospital Amaral Carvalho

An aerial photograph of Hospital Amaral Carvalho, a large medical facility with multiple buildings and a parking lot, situated in a residential neighborhood with many houses and trees.

[direp@amaralcarvalho.org.br](mailto:direp@amaralcarvalho.org.br)