



3RD INTERNATIONAL
Cancer Control Congress



BREAST CANCER STAGE at diagnosis and SURVIVAL in EUROCORE-3 High Resolution and in Cuba

**Allemani Claudia¹, Yaima Galán², Leticia Fernández², Sant Milena¹,
EUROCORE-3 high resolution breast cancer Working Group.**



¹ Analytical Epidemiology Unit, Department of Preventive and Predictive Medicine,
Fondazione IRCCS Istituto Nazionale dei Tumori, Milan, Italy

² Unidad Nacional Para El Control del Cáncer, Registro Nacional de Cáncer de Cuba,
Instituto Nacional de Oncología y Radiobiología, C. Habana, CUBA

***3rd International Cancer Control Congress
Cernobbio, November 8 – 11, 2009***

EUROCARE-3 high resolution breast cancer Working Group :

Allemani C¹, Sant M¹, Berrino F¹, Aareleid T², Ardanaz E³, Barlow L⁴, Bielska-Lasota M⁵, Coebergh JWW⁶, Colonna M⁷, Crocetti E⁸, Crosignani P⁹, Danzon A¹⁰, Federico M¹¹, Garau I¹², Grosclaude P¹³, Hakulinen T¹⁴, Hédelin G¹⁵, Izarzugaza M I¹⁶, Martinez-Garcia C¹⁷, Peignaux K¹⁸, Plesko I¹⁹, Rachtan J²⁰, Storm H²¹, Tumino R²², Torrella-Ramos A²³, Traina A²⁴, Tryggvadóttir L²⁵, Vercelli M²⁶, Zakej M²⁷

¹ Unit of Etiological Epidemiology and Prevention, Fondazione IRCCS Istituto Nazionale dei Tumori, Milano, **Italy**;
² Dept Epid and Biostatistics, National Institute for Health Development, Tallinn, **Estonia**; ³ Navarra Cancer Registry, Instituto de Salud Pública de Navarra, Pamplona, **Spain**; ⁴ Cancer Registry of Sweden, Centre for Epidemiology, Stockholm, **Sweden**; ⁵ Independent Unit of Oncological Education, Maria Skłodowska-Curie Memorial Cancer Centre, Warsaw, **Poland**; ⁶ Eindhoven Cancer Registry, Eindhoven, **The Netherlands**; ⁷ Isère Cancer Registry, Meylan, **France**; ⁸ Tuscany Cancer Registry, U.O. Epidemiologia Clinica & Descrittiva, Firenze, **Italy**; ⁹ Varese Cancer Registry, Fondazione IRCCS Istituto Nazionale dei Tumori, Milano, **Italy**; ¹⁰ Doubs Cancer Registry, Centre Hospitalier Universitaire de Besançon Cedex, **France**; ¹¹ Modena Cancer Registry, Centro Oncologico Modenese, Modena, **Italy**; ¹² Mallorca Cancer Registry, Unitat de Epidemiologia i Registre de Cancer de Mallorca, Palma de Mallorca, **Spain**; ¹³ Tarn Cancer Registry, Albi, **France**; ¹⁴ Finnish Cancer Registry, Institute for Statistical and Epidemiological Cancer Research, Helsinki, **Finland**; ¹⁵ Bas-Rhin Cancer Registry, Dept. of Epidemiology and Public Health, Medicine Faculty, Strasbourg, **France**; ¹⁶ Basque Country Cancer Registry, Departamento de Sanidad Gobierno Vasco, Donostia-San Sebastian, **Spain**; ¹⁷ Granada Cancer Registry, Escuela Andaluza de Salud Pública, Granada, **Spain**; ¹⁸ Côte d'Or Breast & Gynaecologic Cancer Registry, Centre Georges-François Leclerc, Dijon, **France**; ¹⁹ Cancer Research Institute of Slovak Academy of Science, **Slovakia**; ²⁰ Cracow Cancer Registry, M. Skłodowska-Curie Memorial Cancer Institute, Cracow, **Poland**; ²¹ Danish Cancer Society, Prevention & Documentation, Copenhagen, **Denmark**; ²² Ragusa Cancer Registry, Azienda Ospedaliera "Civile M.P. Arezzo", Ragusa, **Italy**; ²³ Castellon Cancer Registry, Dir. Gral. Salud Pública, Servicio de Epidemiología, Valencia, **Spain**; ²⁴ Dep. of Oncology, P.O. "M. Ascoli", ARNAS-Civico, Palermo, **Italy**; ²⁵ Icelandic Cancer Registry, Reykjavík, **Iceland**; ²⁶ Ligurian Cancer Registry, Ist. Nazionale per la Ricerca sul Cancro e Università di Genova, Genova, **Italy**; ²⁷ Cancer Registry of Slovenia, Institute of Oncology, Ljubljana, **Slovenia**

EUROCARE-3

European Cancer Registry-based Study
of Survival and Care of Cancer Patients

- **22** countries
- **42** types of adult cancer
- **24** childhood malignancies
- **67** cancer registries
- **1.8** million adults **1990-94**
- **Follow-up to 1999**

* national cancer data

Iceland *
Finland *
Norway *
Sweden *
Denmark *
England
Scotland *
Wales *
Austria
France
Germany
Italy
Malta *
Netherlands
Portugal
Spain
Switzerland
Czech Republic
Estonia *
Poland
Slovakia *
Slovenia*

EUROCARE-3

Geographic coverage

-  Nordic countries
-  South and West Europe
-  UK (England, Scotland, Wales)
-  Eastern Europe



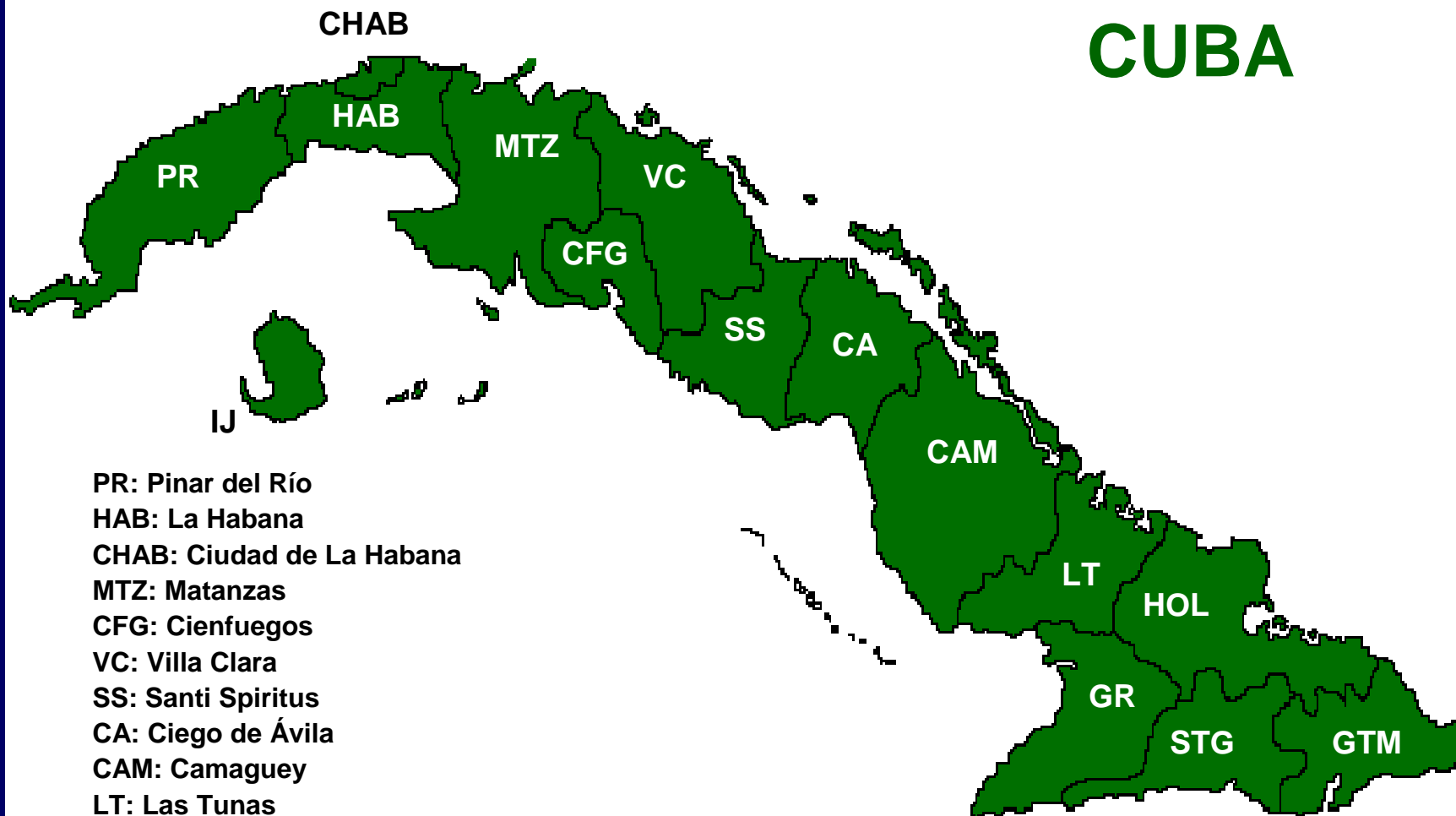
Background

EUROCARE-3 High Resolution (HR) on breast cancer

- **about 15000 breast cancer cases** diagnosed in **1996-98**
- **26 European** population-based **Cancer Registries**
- **12 countries** (Denmark, Estonia, Finland, France, Iceland, Italy, Netherlands, Poland, Slovakia, Slovenia, Spain, Sweden)

**Detailed information on stage, diagnostic procedures,
treatment and follow-up**

CUBA



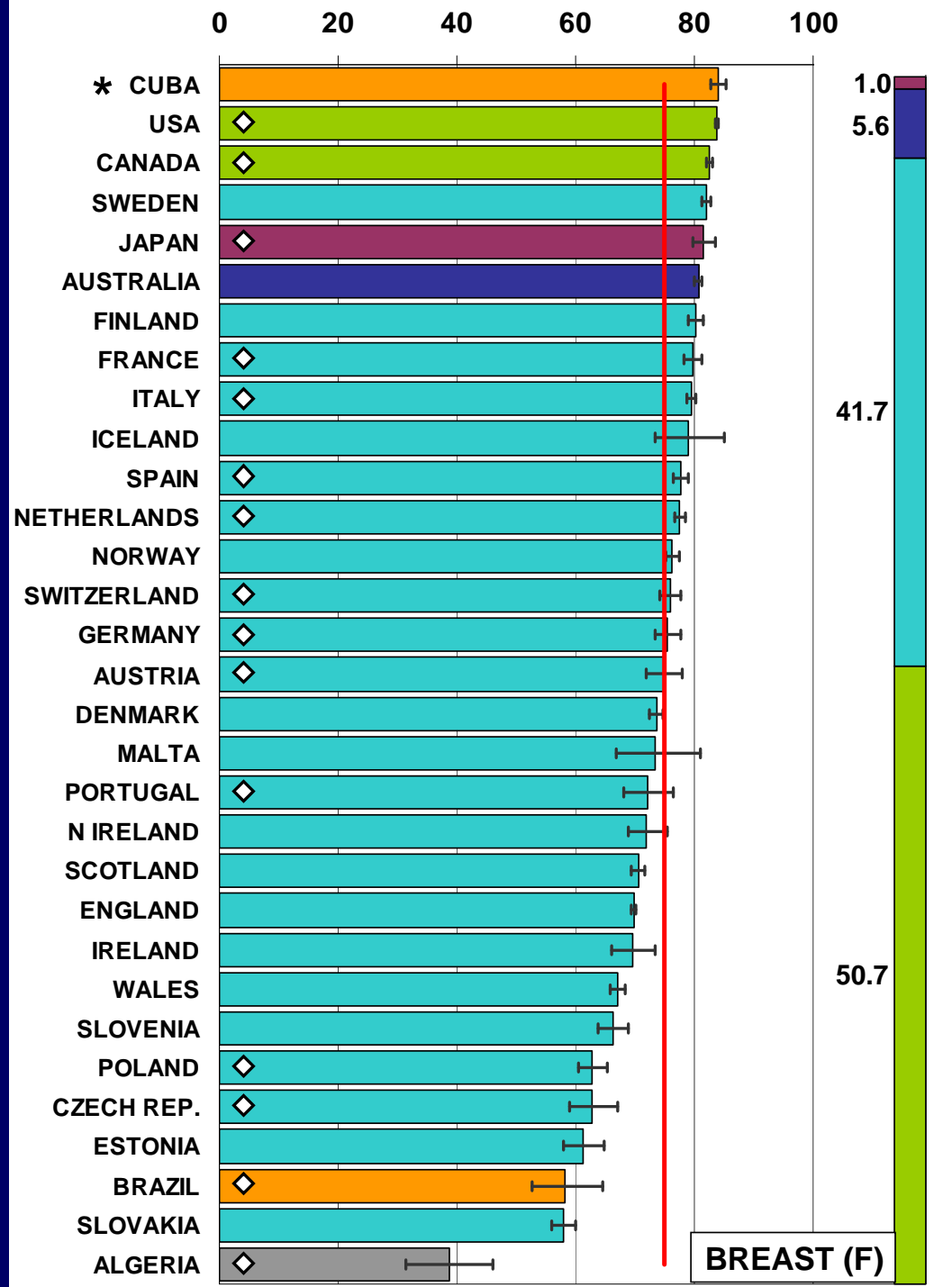
PR: Pinar del Río
HAB: La Habana
CHAB: Ciudad de La Habana
MTZ: Matanzas
CFG: Cienfuegos
VC: Villa Clara
SS: Santi Spiritus
CA: Ciego de Ávila
CAM: Camaguey
LT: Las Tunas
HOL: Holguín
GR: Granma
STG: Santiago de Cuba
GTM: Guantánamo
IJ: Isla de la Juventud

Cuban National Cancer Registry, La Habana

CONCORD

Five-year relative survival (%) - breast cancer, women (15-99 years), diagnosed in 1990-94, follow up to 1999

Coleman MP *et al.*, Lancet Oncol 2008



Aims

To describe and compare

 Stage distribution at diagnosis

 Five-year stage-specific survival

in European and Cuban areas

Material and methods

■ ■ ■ EUROCARE-3 High Resolution (HR): **13,052** breast cancer cases diagnosed in **1996-1998**, with **complete follow-up information**

■ ■ ■ Cuban National Cancer Registry: **6,037** breast cancer cases diagnosed in **1996-1998**

Stage categorized into:

- in situ
- early (T1N0M0)
- large, node-negative (T2-3N0M0)
- node-positive (T1-3N+M0)
- locally advanced (T4N+/-M0)
- metastatic (M1)
- stage not specified (Unknown)

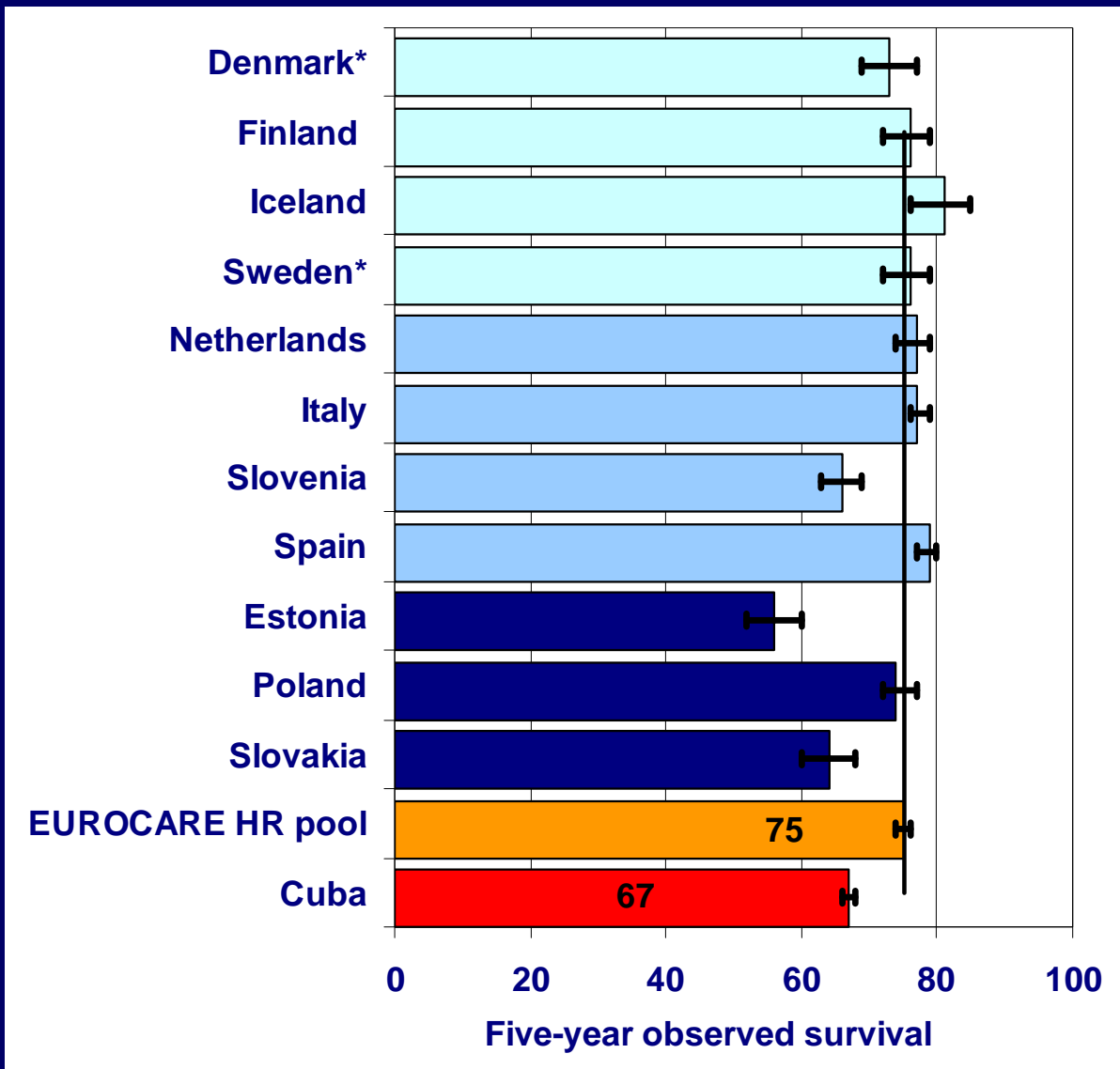
Observed survival estimated by the Kaplan-Meier method

Stage distribution (%) by geographical area

	EU-3 HR*	Cuba
In situ	1.6	0.3
T1N0M0	29.3	11.3
T2-3N0M0	13.7	20.8
T1-3N+M0	31.7	19.3
T4N+/-M0	8.3	5.4
M1	5.9	2.2
Unknown	9.5	40.7
<i>No. of total cases</i>	13,052	6,037

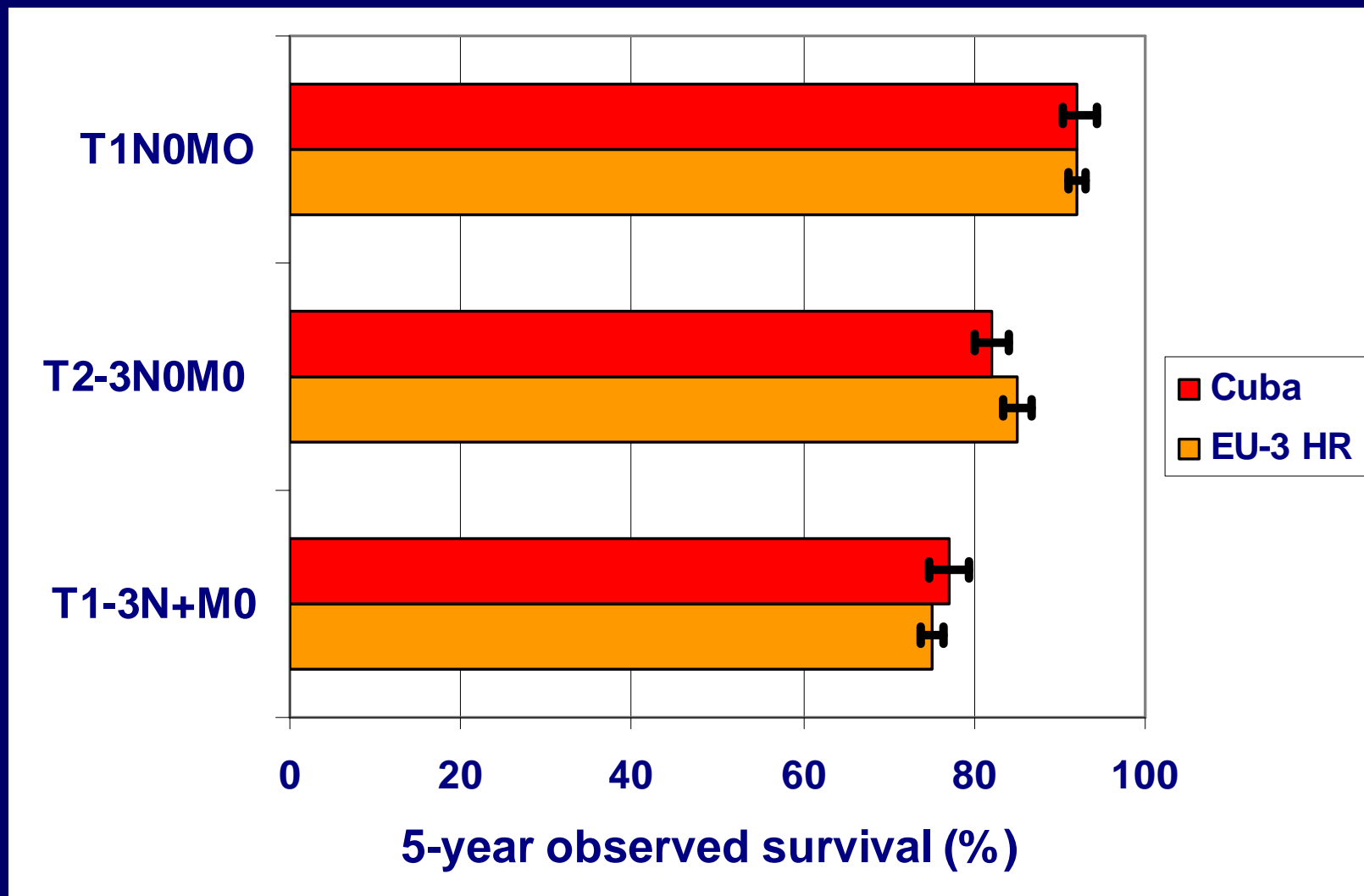
* 11 countries with complete follow-up information

Five-year observed survival by geographical area



* Year of diagnosis: 1994

Five-year observed survival by stage at diagnosis

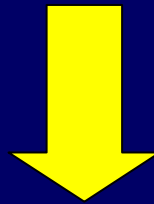


Conclusions

■ Prognosis of Cuban women was close to the European scenario for early and localized tumours

■ Not definitive results regarding advanced and locally advanced stage tumours because of high proportion of unknown stage in Cuba

Need of resources for High Resolution studies in Cuba



To **improve** the **data quality** of the Cuban Cancer Registry

Thanks Gracias



Grazie